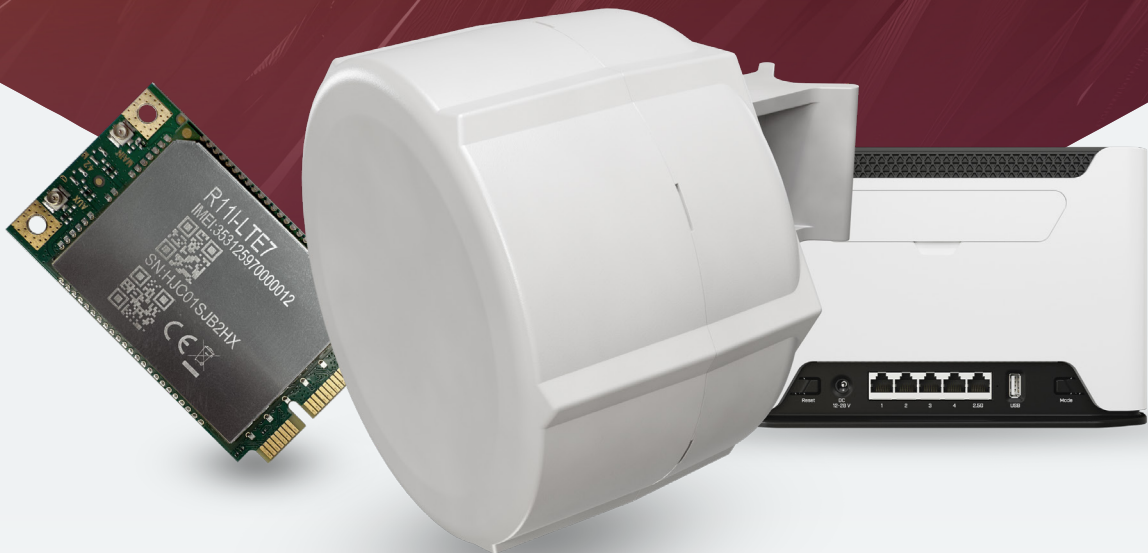


# CAT6 becomes CAT7 – and with a better price! Faster. Smarter. More Affordable.

Your favorite MikroTik LTE products just got a major upgrade. Same reliability, same design – but now with LTE Category 7 speed, expanded frequency support, and lower prices across the board.

R11e-LTE7 / SXT LTE7 kit / Chateau LTE7



## Why Upgrade to CAT7

- ✓ Twice the upload speed\*
- ✓ Expanded frequency support – now includes Band 32 (1500 MHz) for even better performance in congested areas.
- ✓ Same trusted design – no changes to installation or configuration.
- ✓ Lower cost – better connectivity that actually costs less, especially on volume orders.

*\* Depending on the LTE tower infrastructure and other variables.*

## R11e-LTE7:

quick drop-in upgrade for mobile integrators

The next-generation **miniPCIe** LTE CAT7 modem for your RouterBOARDS. Drop-in replacement for FG621-EA – now offering **300 Mbps down / 100 Mbps up**, with added **Band 32 & Band 28** support. Perfect for LtAP, RBM33G, or any system with miniPCIe + USB. Compared to the previous FG621 version, this miniPCIe unit has a smaller form-factor, so it should fit better inside more devices.

Upgrade your mobile connectivity without changing the whole setup!



## SXT LTE7 kit:

reliable connectivity in remote areas

A **rugged outdoor LTE CPE** with the new R11e-LTE7 modem inside. Delivers stable, fast **Internet where phones fail** – ideal for farms, off-grid connections, and countryside estates. Now with better uplink, **PoE in/out**, and a wide 12–57 V power range. Mount it, connect, and stay online.

Faster uploads. Lower latency. Same trusted SXT design that stays hidden in plain sight.



## Chateau LTE7:

a stylish home and office LTE powerhouse, EU bestseller

Our most versatile home router, featuring the new CAT7 modem and a speedy quad-core CPU for all your household network security and management tasks. **Dual-band, dual-chain Wi-Fi, 5x Gigabit ports**, and full RouterOS v7 features – all at a significantly lower price than the previous LTE6 version.

Perfect for secure VPN work, home offices, or small business networks that care about both function and aesthetics.

Amazing in the hands of seasoned system administrators. Or in a household with zero IT skills. Or anything in-between. Chateau and RouterOS v7 can do it all!



All the new CAT7 devices also support **2x2 MIMO DL** and **carrier aggregation**. That means they can use **multiple LTE bands simultaneously**. That's a huge advantage when there are a lot of mobile users in the area. It offers **better responsiveness** in a crowded environment. And **higher efficiency for weaker signal situations** in the countryside. Win-win! We have seen Internet speed doubling in rural areas after enabling carrier aggregation.

## • Supported 2xCA combinations

B1+B1/3/5/7/8/20/28/32/40/41 (100MHz)	B20+B1/3/7/32/38/40
B3+B1/3/5/7/8/20/28/32/40/41 (100MHz)	B28+B1/3/5/7/32
B5+B1/3/5/7/28/40/41 (100MHz)	B38+B38
B7+B1/3/5/8/20/28	B40+B40
B8+B1/3/7/20/32/40/41 (100MHz)	B41+B41 (100MHz)

## • Supported 2xCA (UL) LTE bands (Intra-band contiguous only)

B1+B1	B8+B8
B3+B3	B38+B38
B5+B5	B40+B40
B7+B7	B41+B41

## • SXT LTE7 specifications



Product code	SXTR&R11e-LTE7
CPU	QCA9531 650 MHz
CPU architecture	MIPSBE
Size of RAM	64 MB
RAM type	DDR2
Storage	16 MB Flash
Number of 100M Ethernet ports	2
MiniPCIe slots	1
Switch chip model	QCA9531
LTE modem	R11e-LTE7
TAC	35312597
LTE Category	7 (DL: 300 Mbps; UL: 100 Mbps)
MIMO DL	2x2
MIMO UL	1x1
LTE FDD bands	1 (2100 MHz) / 3 (1800 MHz) / 5 (850 MHz) / 7 (2600 MHz) / 8 (900 MHz) / 20 (800 MHz) / 28 (700 MHz) / 32 (1500 MHz)
LTE TDD bands	38 (2600 MHz) / 40 (2300 MHz) / 41 (2500 MHz)
3G Category	R8 (DL: 42.2 Mbps; UL: 5.76 Mbps)
3G bands	1 (2100 MHz) / 3 (1800 MHz) / 5 (850 MHz) / 8 (900 MHz)
Dimensions	140 x 140 x 56 mm
Operating system	RouterOS v7, License level 3
Operating temperature	-40°C to +60°C

## • SXT LTE7 powering

DC input	PoE-In
PoE-In input Voltage	12-57 V
Power adapter nominal voltage	24 V
Power adapter nominal current	1.2 A
PoE-in	802.3af/at
PoE-Out	Passive PoE up to 57V (Ether2)
Max power consumption without attachments	7 W
Max power consumption	24 W

## • SXT LTE7 included parts



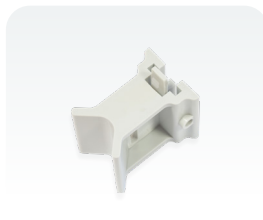
24 V 1.2 A  
power adapter



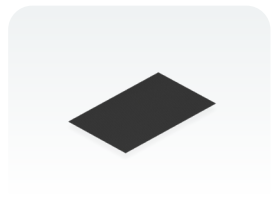
Gigabit PoE  
injector



Metal ring



Pole mounting  
bracket



Elastic thermal  
pad

## • Chateau LTE7 specifications



Product code	D53G-5HacD2HnD-TC&R11e-LTE7
CPU	Quad-Core IPQ-4019 448-896 MHz (auto)
CPU architecture	ARM 32bit
Size of RAM	256 MB
RAM type	DDR3L
Storage	16 MB Flash
Number of 1G Ethernet ports	5
USB port	1 (2.0 type A)
Switch chip model	IPQ-4019
Wireless interface model	IPQ-4019 (2.4 GHz), IPQ-4019 (5 GHz)
Wireless	2.4 GHz 802.11b/g/n dual-chain, 5 GHz 802.11a/n/ac dual-chain
Antenna gain	2.4 GHz - 2 dBi, 5 GHz - 4 dBi
LTE category	7 (DL: 300 Mbps; UL: 100 Mbps)
LTE modem	R11e-LTE7
TAC	35312597
MIMO DL	2x2
MIMO UL	1x1
LTE FDD bands	1 (2100 MHz) / 3 (1800 MHz) / 5 (850 MHz) / 7 (2600 MHz) / 8 (900 MHz) / 20 (800 MHz) / 28 (700 MHz)
LTE TDD bands	38 (2600 MHz) / 40 (2300 MHz) / 41 (2500 MHz)
3G Category	R8 (DL: 42.2 Mbps; UL: 5.76 Mbps)
3G bands	1 (2100 MHz) / 3 (1800 MHz) / 5 (850 MHz) / 8 (900 MHz)
Dimensions	240 x 156 x 44 mm
Operating system	RouterOS v7, License level 4
Operating temperature	-40°C to +70°C

## • Chateau LTE7 powering

Number of DC inputs	1
DC jack input Voltage	12-28 V
Power adapter nominal voltage	24 V
Power adapter nominal current	1.2 A
Max power consumption without attachments	16 W
Max power consumption	21 W

## • Chateau LTE7 wireless specifications

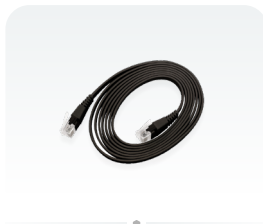
Rate (2.4 GHz)	Tx (dBm)	Rx (dBm)
1MBit/s	25	-100
11MBit/s	25	-94
6MBit/s	26	-95
54MBit/s	23	-78
MCS0	26	-96
MCS7	22	-73

Rate (5 GHz)	Tx (dBm)	Rx (dBm)
6MBit/s	26	-96
54MBit/s	22	-80
MCS0	26	-96
MCS7	21	-75
MCS9	19	-70

## • Chateau LTE7 included parts



24 V 1.2 A  
power adapter



UTP Flat  
Cable (1.5m)

## • R11e-LTE7 specifications



Product code	R11e-LTE7
LTE modem	ASR1828
TAC	35312597
Format	miniPCIe
LTE Category	7 (300Mbps Downlink, 100Mbps Uplink)
MIMO DL	2x2
MIMO UL	1x1
LTE FDD bands	1 (2100MHz) / 3 (1800MHz) / 5 (850MHz) / 7 (2600MHz) / 8 (900 MHz) / 20 (800MHz) / 28 (700MHz) / 32 (1500 MHz)
LTE TDD bands	38 (2600MHz) / 40 (2300MHz) / 41 (2500MHz)
3G Category	R8 (42.2Mbps Downlink, 5.76Mbps Uplink)
3G bands	1 (2100MHz) / 3 (1800MHz) / 5 (850MHz) / 8 (900MHz)
RF connector type	2 uUFL
Operating system	RouterOS
Max power consumption	5 W
Operating temperature	-10°C to +55°C